

## NURSING AND THE WAR.

### THE ROYAL RED CROSS.

The King awarded the Royal Red Cross to the following ladies on Tuesday, January 29th:—

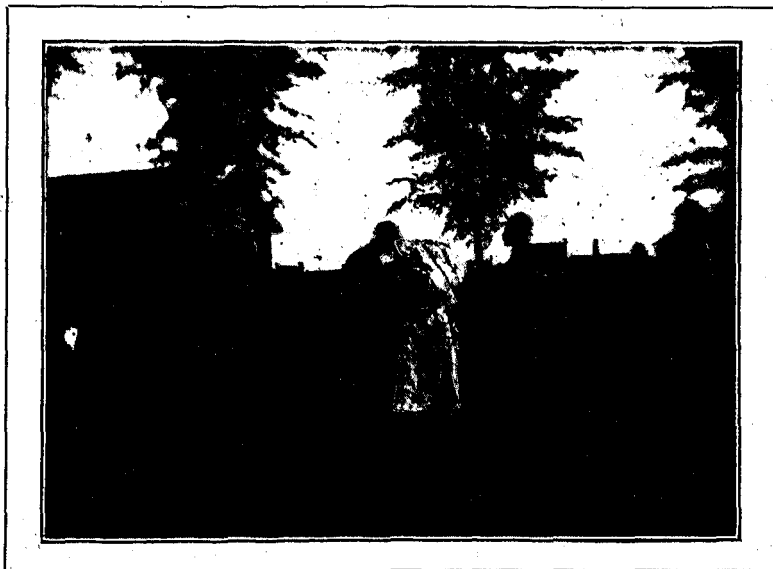
#### FIRST CLASS.

Mrs. Helen Cousins, Matron, 10, Palace Green, W.; Miss Gertrude Annie Flood, Matron, Mil. Orthopædic Hpl., Shepherd's Bush; Lady Sargant (Amelia Julia), A.R.R.C., Comdt. and Matron, St. Anselm's Hpl., Walmer.

#### SECOND CLASS.

Mrs. Louisa Joyce Acton, Town Hall Hpl., Torquay; Miss Alfreeda Jean Attrill, Nursing Sister, C.A.N.S.; the Duchess of Bedford, Mary du Caurroy, Woburn Aux. Hpl., Bedford; Mother

(Nursing Services), Dublin; Miss Kleo Friend, Comdt., The Castle Aux. Hpl., Ryde, Isle of Wight; Miss Charlotte Mary Gooding, Sister, Kingston, Surbiton, and District Red Cross Hpl., New Malden; Mrs. Edith Mary Goss, Lady Supt., Palace Aux. Hpl., Gloucester; Mrs. Sybil M. Harry, Sister, Hqrs., London; Miss Amy Howard, Nursing Sister, C.A.N.S., Can. Gen. Hpl., Orpington; Miss Edith Hudson, Nursing Member, C.A.N.S.; Miss Kate Elizabeth Jones, Matron, Kingston, Surbiton, and District Red Cross Hpl., New Malden; Miss Margaret Meikle, Matron, Cadland Aux. Hpl., New Forest, Hants.; Miss Kate Mildred Moore, Matron, Hqrs., London; Miss Grace Morgan, Matron, Arrowe Hall Hpl., Woodchurch, nr. Birkenhead; Miss Millicent Mary Nix, Nurse, The Princess Christian Hpl., Weymouth; Mrs. Sophie Eleanor Pollard, Lady Supt., Aux. Mil. Hpl., Thirsk; Miss Katherine Rapson, Matron, St. George's Hill Aux. Hpl., Surrey; Miss Ethel L. Shute (Sister Ignatius), Matron, St. Andrews Hpl., Dollis Hill, London; Miss Mary Simon, Matron, Wykeham Abbey Aux. Mil. Hpl., Yorks; Miss Elizabeth Smith, Sister, Camberley Aux. Mil. Hpl.; Miss Ellenor Stevenson, Matron, Aux. Hpl., Henley-in-Arden, Warwick; Miss Mabel Vivian, Matron, The Princess Christian Hpl., Weymouth; Miss Edith Mary Williams, Matron, Red Cross Hpl., Brecon, S. Wales; Miss Mary Gertrude Woodrow, Matron, Caenshill Aux. Hpl., Weybridge.



THE SALUTE.

Mary Berckmans, Matron, Mil. Hpl., Waterloo Park, Lancs.; Miss Constance Bischoff, Staff Nurse, Clandon Park, Guildford; Miss Ada Blackman, London Hpl.; Miss Emily Caroline Clifford Bramwell, Matron, The Red House Aux. Hpl., Leatherhead; Miss Amy Ada Bryant, Matron, Benfleet Hall Aux. Hpl., Sutton; Miss Sarah E. Chadwick, Sister, St. John's Hpl., Southport; Mrs. Marguerite Gerrard Clement, Sister (late A.N.S.), Mil. Hpl., Newcastle-on-Tyne; Miss Mary Ellen Crow, Sister, Oakenshaw Hpl., Surbiton; Miss Marianne Emaline Dann, Matron, Red Cross Hpl., Hillfield, Reigate; Mrs. Ebba Wendell De Merrill, Nursing Sister, C.A.N.S., Can. Gen. Hpl., Taplow; Miss Mary Richmond Easton, Matron, Hqrs., London; Miss Mary Emerson, Sister, Hildens Mil. Hpl., Haslemere; Miss Eliza Ann Everett, Nurse, Regents Park Hpl., Southampton; Miss Jeanie Fitzpatrick, (Nursing Services), Dublin; Miss Nora Fitzpatrick, Nurse

the following ladies with the Royal Red Cross (second class):—

Queen Alexandra's Imperial Military Nursing Service Reserve.—Sister Emily Bryant and Sister Mabel Sinton.

Canadian Army Nursing Service.—Sister Isobel Connor, Sister Winifred Fray, Sister Mary Hambly, Sister Kathleen Little, Sister Margaret McCort, Sister Annie Stirling and Sister Ethel Upton.

Voluntary Aid Detachment.—Miss Constance Prater.

Queen Alexandra received at Marlborough House the Members of the Military Nursing Services who had been awarded the Royal Red Cross, subsequent to the Investiture at Buckingham Palace.

The names of some 700 ladies have been brought to the notice of the Secretary of State for War for

[previous page](#)

[next page](#)